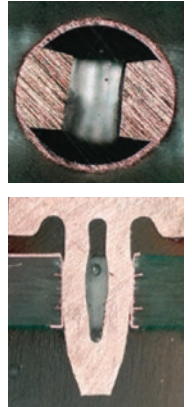


Press-Fit Technology









Solderless Interconnects

- Pluggable, repeatable, reliable
- Compliant high normal force technology; accommodates coefficient of thermal expansion mismatch



Our Core Product Line

Product Family	Interplex Press-Fit Type	Picture	Finished PCB Hole Diameter (mm)	Insertion Force *	Push-out Force **
Mini	0.4 MiniPLX		Ø0.55 - 0.65	≤100N	≥20N
Signal	0.4 EON		Ø0.71 - 0.81	≤70N	≥20N
Signal	0.64 EON		Ø1.0 - 1.1	≤100N	≥30N
Signal	0.64HF EON		Ø1.0 - 1.1	≤150N	≥50N
Power	0.8 EON		Ø1.45 - 1.55	≤180N	≥60N
High Power	1.2 EON		Ø2.0 - 2.1	≤300N	≥60N

* Thickness ≥1.6 mm, with 1mm. Sn PCB

** After storage at room temperature for ≥24 hours

Customizable

Available in various sizes, materials, & plating finishes, tailor-made to your end application needs

Qualified

Automotive qualified to IEC, SAE & many other customized performance requirements

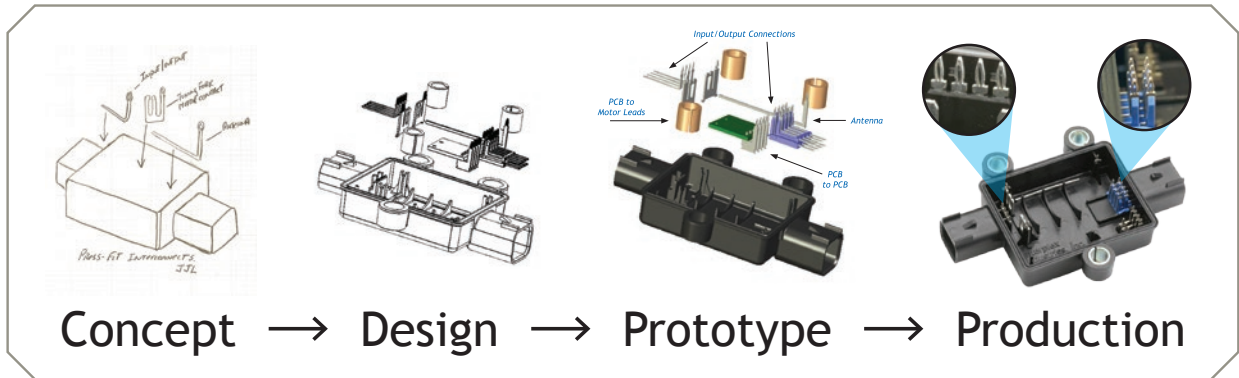
Reliable

Many years of experience in custom applications; billions of our Press-Fits are in the field

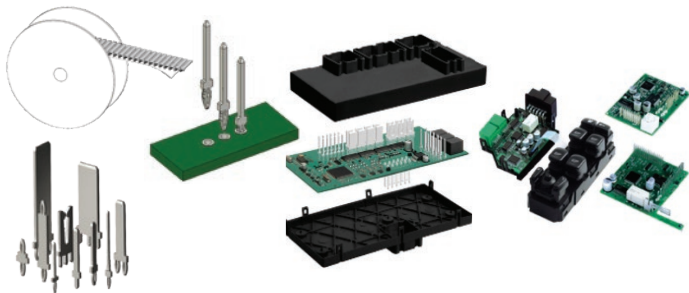
Press-Fit Technology

Applications

Power & EV, sensors & ADAS, high density & hybrid connectors, braking, electronic control, etc.



Direct Insert Terminals



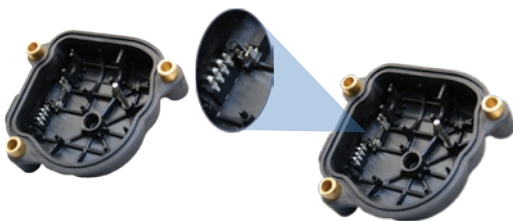
- Body control modules
- Power distribution centers
- Door & window switch modules
- Rear view mirrors

Customized Connectors



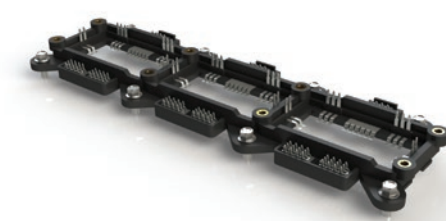
- Header connectors for small control modules
- Switch assemblies
- Board-to-board stacking
- Wire-to-board connections

Custom Molded Modules



- Control modules: Engine, brake, body, etc.
- Sensors: Airbag, pressure, etc.
- Actuator controls: Power steering, active suspension

Power Lead Frames



- Wire-bondable Press-Fit connections
- Excellent flatness & positional tolerance capabilities